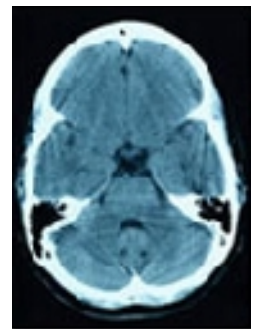
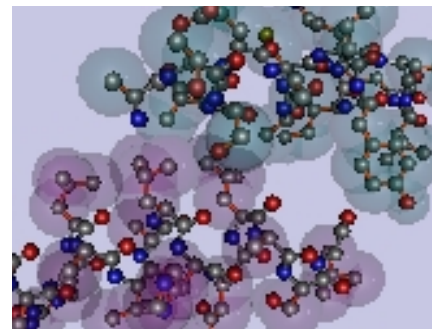


CSCBCE 2010

5th Canadian Student Conference on Biomedical Computing and Engineering



Sponsorship Brochure



<http://www.cscbce2010.org>



Dear Prospective Sponsor,

On May 20th – 22th of 2010, the Fifth annual Canadian Student Conference on Biomedical Computing and Engineering (CSCBCE) will be held at University of Waterloo. CSCBCE is a research event that will bring together students in the fields of computational biology and biomedical engineering for an opportunity to network and learn about the latest advances in this rapidly-evolving research area.

This year's conference is expected to cost \$41,541 to operate, and we are currently seeking to raise this amount through sponsorships and donations. Sponsors will be given the opportunity to receive exposure of their organization at this event through demonstration booths, guest-speaker presentations and ad-space (depending on the sponsorship package chosen). This event is sure to be an excellent venue for companies and the future leading minds of Biomedical Computing and Engineering to bridge the gap between the corporate world and academia.

We thank you in advance for your time and consideration, and we will be in touch to follow up with you regarding the possibility of having your organization as a sponsor. We look forward to working with you on what promises to be an outstanding conference.

**Yours truly,
CSCBCE 2010 Sponsorship Team**



Table of Contents

What is CSCBCE?	2
What is Biomedical Computing and Engineering?	2
Program Schedule	3
Sponsoring CSCBCE 2010	4
Sponsorship Packages	5
Allocation of Funds	6
Contact Information	Back Cover



What is CSCBCE?

The Canadian Student Conference on Biomedical Computing and Engineering (CSCBCE) is a two and a half day conference created by students and targeted for students. Its mission is to provide a venue through which young researchers in biomedical computing and engineering are able to come together to meet, network, and interact with other researchers and the corporate world.

What is Biomedical Computing and Engineering?

Biomedical Computing and Engineering combines the diagnostic and investigative aspects of biology and medical sciences with the sheer power and problem-solving capabilities of modern computing.

In this new rapidly-evolving discipline, computers are used to accelerate research progress, simulate patient behavior, and visualize complex biological models. They increase the efficiency and extend the boundaries of medical research.

Biomedical Computing and Engineering goes far beyond simply bringing computers into the lab. The field is important for both research and clinical settings, with emphasis on integrating modern computing with the traditional practice of medicine and life science.



Program Schedule

Thursday (May 20th)

Afternoon

Lunch

Tutorials

Evening

Ice Breaker at the Grad House

Friday (May 21st)

Morning

Breakfast

Keynote Speaker

Biomedical Computing Paper Presentations

Lunch

Afternoon

Keynote Speaker

Biomedical Engineering Paper Presentations

Poster Session

Evening

Dinner

Evening Social Event

Saturday (May 22nd)

Morning

Breakfast

Keynote Speaker

Poster Session

Industry Panel

Awards Luncheon

Excursion



Benefits of Sponsoring CSCBCE 2010

Recruitment: Representatives from sponsoring companies will have the opportunity to informally interview and attract leading students in the field of biomedical computing.

Networking: Make new contacts and publicize the activities of your organization. By targeting both undergraduate and graduate students across many disciplines, the conference will be host to current and future leaders in biomedical computing and engineering from institutes across the country.

Visibility: Advertising with CSCBCE allows you to target those who will not only benefit the most from your products today, but will also be purchasing your products in the future.

Support of Student Initiative: Investing in students' education now will ensure that the biomedical computing and engineering fields continue to advance by leaps and bounds.



Sponsorship Packages

We appreciate any monetary or in kind donations that you would like to provide. For guidance, we have created a series of four sponsorship packages, each with a minimum donation amount. In the table below, we have outlined some benefits that we would be happy to provide with each level of sponsorship.

Bronze: \$1000+

Silver: \$2500+

Gold: \$5000+

Platinum: \$7500+

	B R O N Z E	S I L V E R	G O L D	P L A T I N U M
Name and logo in proceedings and book of abstracts	●	●	●	●
Name and logo in sponsor's section of conference webpage	●	●	●	●
Promotional items provided by sponsor placed in delegate's package	●	●	●	●
Logo in promotional poster for conference (Nov. 15th printing deadline)		●	●	●
Booth available at poster session		●	●	●
One complimentary industry member registration		●	●	●
Acknowledgement in all external email communication			●	●
Verbal acknowledgement during awards luncheon			●	●
5 minute presentation prior to the industry forum			●	●
Name attached to a student award for best paper or poster				●
Name attached to a meal or reception*				●

* The top overall sponsor will have the awards luncheon named in their honour.



Allocation of Funds (Total Budget = \$41,541)

- **Catering Services (\$12,962)**
Includes breakfasts, lunches, coffee breaks, and the awards luncheon.
- **Networking Socials (\$832)**
Reception on the opening evening, tentatively hosted at the Grad House.
- **Travel and accommodation grants (\$17,885)**
 - Keynote Speakers (\$4,005)**
($\$750$ air travel + 3 nights \times $\$150$ + $\$135$ per diem = $\$1,335 \times 3$ speakers)
 - Student Travel Awards (\$10,625)**
(10 national \times $\$375$ + 15 regional \times $\$250$ + 25 provincial \times $\$125$)
 - Tutorial Speakers (\$3,255)**
($\$750/\$500/\$250$ travel + 3 nights \times $\$150$ + $\$135$ per diem each, assuming one speaker each from the province, the region, and national areas)
- **Awards (\$718)**
Includes student awards for best poster and best paper, as well as keynote speaker gifts.
- **Delegate Packages (\$4,931)**
Includes publication expenses for program and proceedings book-lets, and items such as nametags, pens, and folders.
- **Miscellaneous (\$4,213)**
Includes conference advertising and session posters, website transaction fees, and seed money for CSCBCE 2011.



**Thank you in advance for your support and sponsorship.
We look forward to working with you!
- CSCBCE 2010 Sponsorship Team**

Canadian Student Conference on Biomedical Computing and Engineering

**C/O Robert Fraser, Chair CSCBCE 2010
School of Computer Science
200 University Avenue West
University of Waterloo
Waterloo, Ontario, N2L 3G1**

Contact Person: Robert Fraser

Telephone: (519) 888-4567 ext: 35351

Fax Number: (519) 885-1208 (attn: Robert Fraser)

Email: r3fraser@cs.uwaterloo.ca